

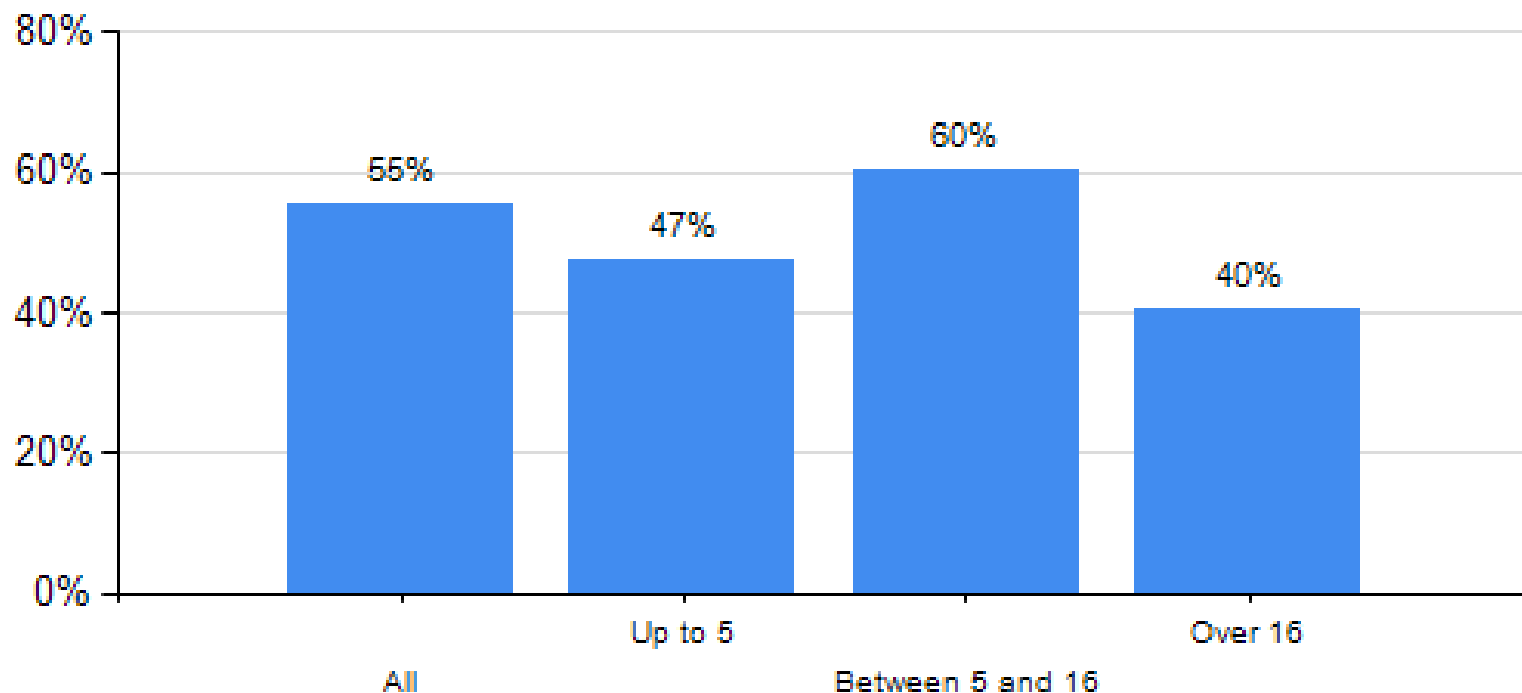
# Health Assessments Update

Corporate Parenting Board

5 October 2017

# Up to date Health Assessments

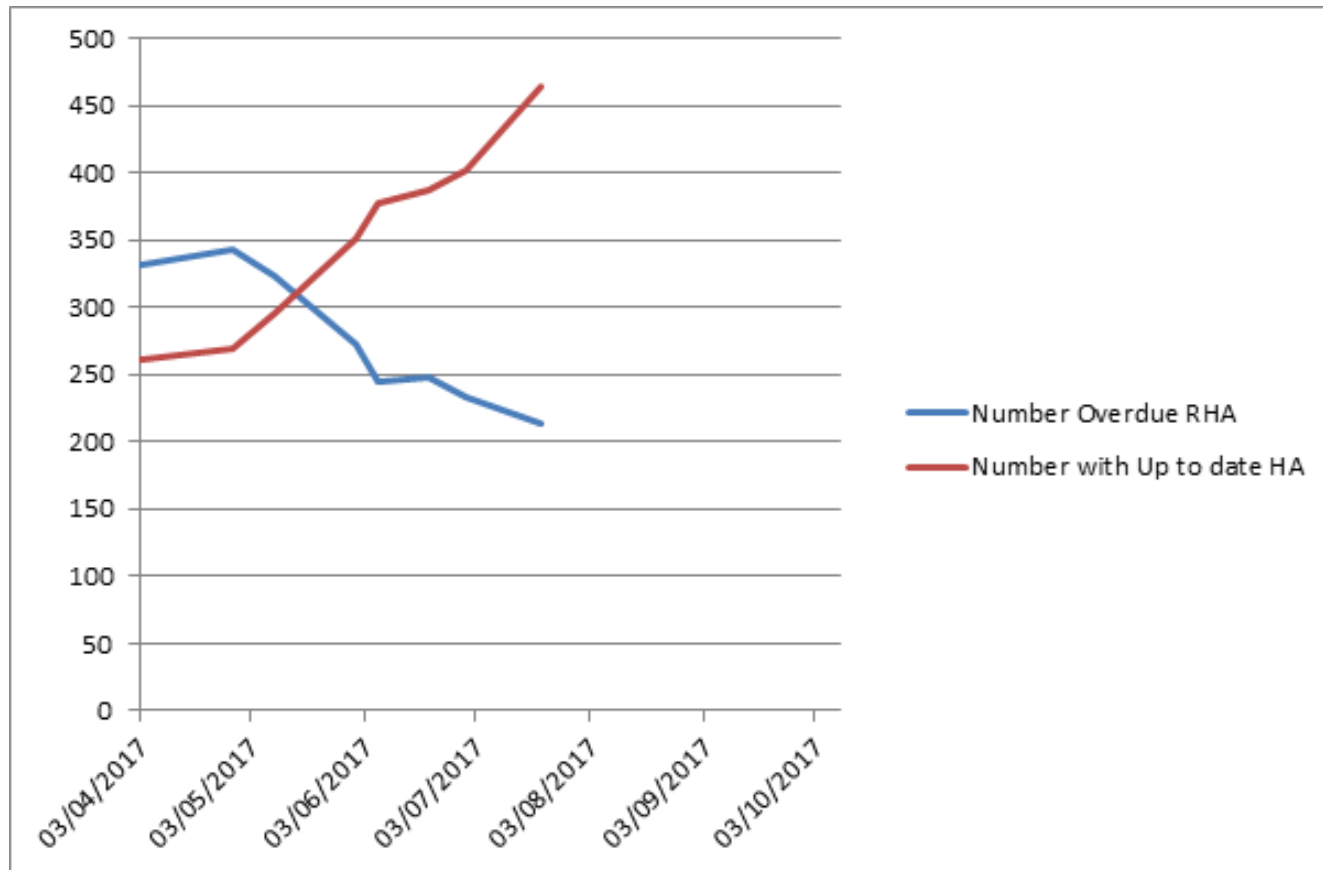
*(data as at 18 September 2017)*



# Current situation

- The ISL Health & Wellbeing team is responsible for processing all Health Assessment requests
- A joint Health and Social Care Health Assessment Working Group meets monthly to monitor, track progress and to identify changes that can improve the process
- The headline figure of 55% is under-reporting the number of Health Assessments up to date as some have been completed but not yet returned to the ISL Health & Wellbeing team
- A dedicated Health Assessment Nurse team has been created (new posts) by the Public Health Nursing Service Lead Worcestershire Health and Care Trust
  - Will be managed by the Named Nurse for Looked After Children
  - Located within the ISL Health & Wellbeing Team
  - All 3 posts (2.7 wte) appointed to and will take up post in October and November.
- Until the team is up and running the Health Trust is paying overtime to workers to address the backlog

# Addressing the backlog



# Social Care

- Named Nurse for Looked After Children attends Social Work Team meetings to stress the importance of Health Assessments
- Met with designated Business Support Officers from each of the service areas to target outstanding Health Assessment requests
- Group Manager for Safeguarding & Quality Assurance has taken the lead for Safeguarding Services
- Is now a report on the CFC Dashboard that lists all outstanding Health Assessment requests by worker and team. Accessible to all team managers and group managers
- Between May and August 2017 the number of Health Assessment requests with social work teams dropped from 464 to 140
- Drop from 39% to 16%

# Worcestershire Health and Care Trust

- Initial Health Assessments are completed by Paediatricians
  - Standard is 28 days
  - Average time for completion is 17 days
- Review Health Assessments are completed by Health Visitors (ages 0-5) and School Health Nurses (ages 5-19)
  - Timescale for completion is within 60 days of receipt of paperwork from the social worker
  - 94% were completed within this timescale in Quarter 1 (April to June 2017)
  - Problem is if sent late to health colleagues then even if they complete within their 60 day timescale the Health Assessment will still be out of timescale

# Next Steps

- Audits of completed Health Assessments indicate they are of a good quality
- But completion rates continue to be too low
- Further work to be done:
  - Social Care and Health to address any barriers to completion
  - Improve recording of Dental Checks
  - Improve completion of Strengths, Difficulties Questionnaires
  - Reintroduce Health Passports for Care Leavers